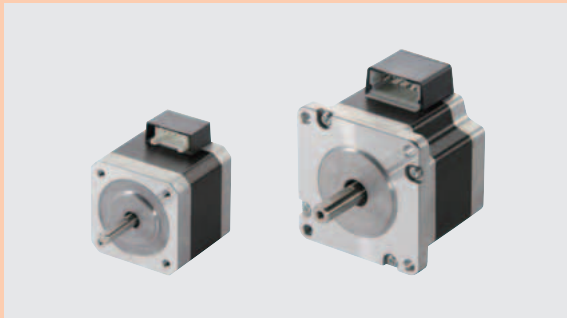


# 0.72°/0.36° Stepper Motors PKP Series

For details on this product please refer to our website.  
[www.orientalmotor.com/catalog](http://www.orientalmotor.com/catalog)

● For detailed information about regulations and standards, please see the Oriental Motor website.



View Expanded Product Information, Specifications, CAD, Accessories & more online. Visit [www.orientalmotor.com/catalog](http://www.orientalmotor.com/catalog) or use the QR code and select "0.72°/0.36° Stepper Motors PKP Series".

The 0.72° and 0.36° **PKP Series** Stepper Motors offer the lowest vibration and noise characteristics, especially in the low speed range and are superior for positional accuracy.

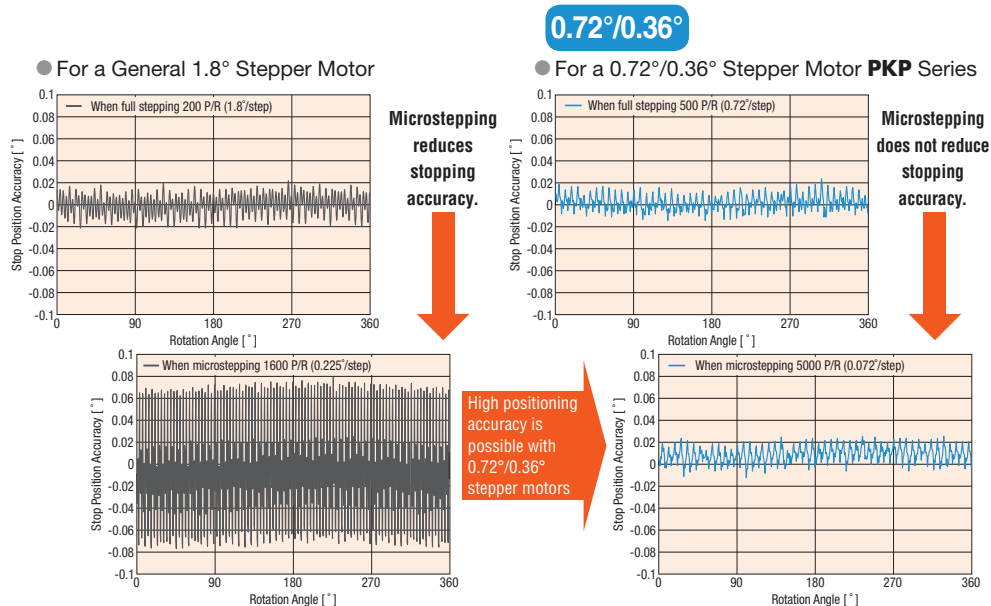
- **0.72°** (500 pulse/rev) & **0.36°** (1,000 pulse/rev)
- High Torque Performance
- Lowest Vibration and Noise
- Stop Position Accuracy of 2 Arcminutes (No Load)

## Features

### High Accuracy

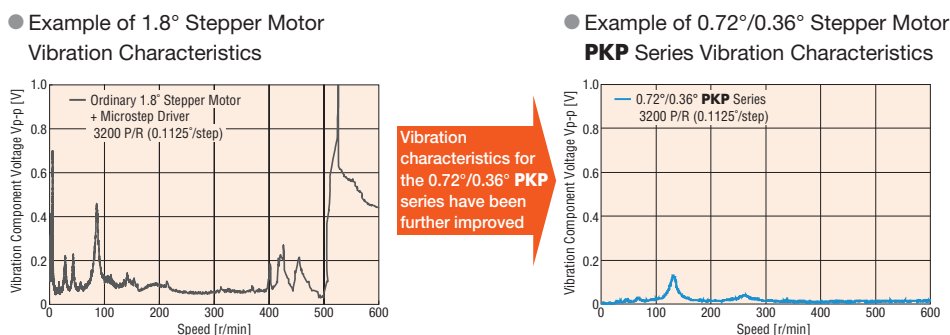
In general, stopping accuracy tends to be lower during microstep operation\* than full step operation and this effect is more noticeable in a 1.8° motor. In this situation, using a 0.72°/0.36° stepper motor enables a higher positioning accuracy.

● **Stopping Accuracy**  
0.72° stepper motor standard type ±0.05° (±3 arcmin)  
0.36° stepper motor high-resolution type ±0.034° (±2 arcmin)



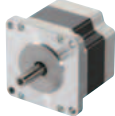




### Low Vibration and Low Noise

Because the basic step angle is small at 0.72° (0.36° for high-resolution type), the vibrations and noise are lower than the 2-phase stepper motor with a basic step angle of 1.8°. Also, vibrations and noise can be further reduced by an advanced microstep driver.



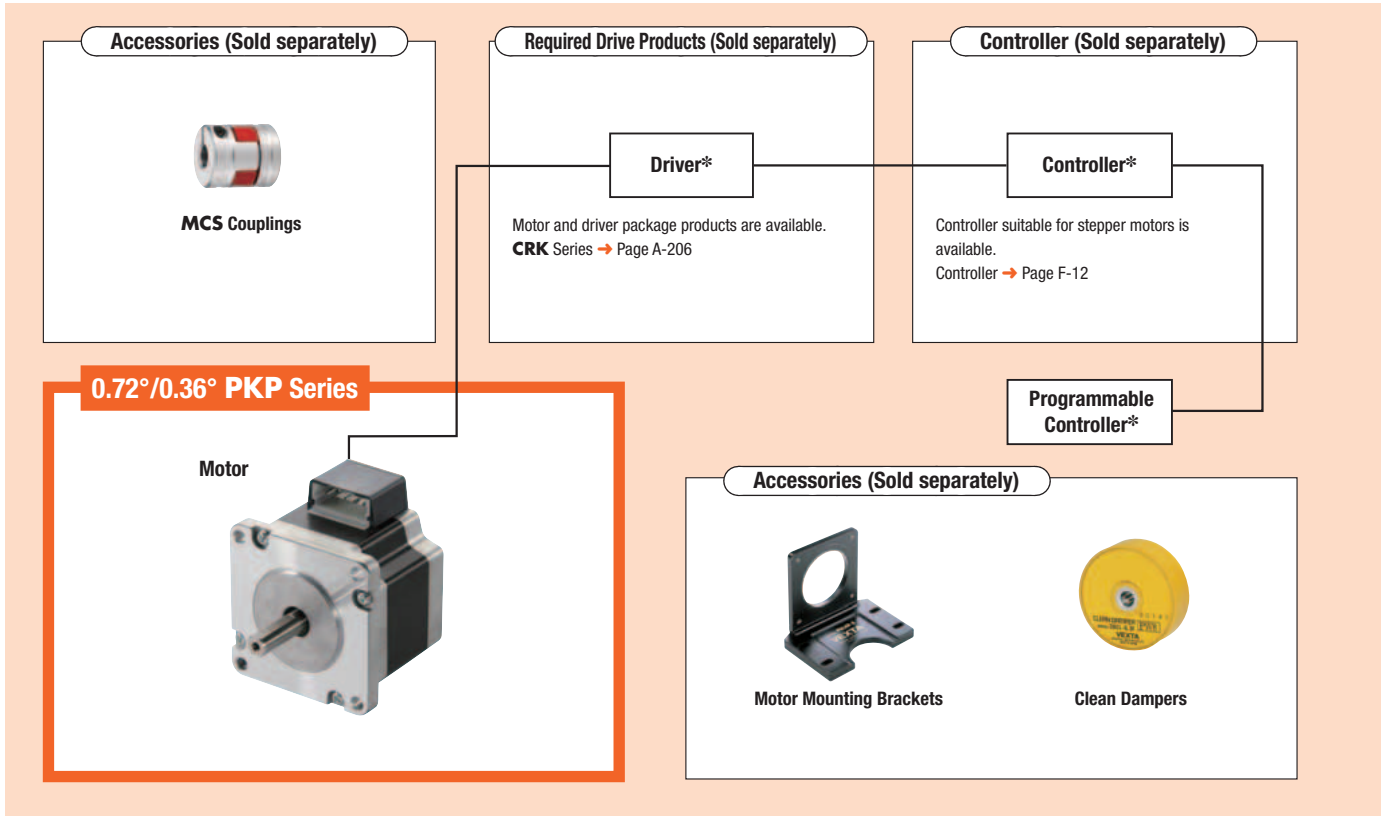
## Product Line of Motors

Motor Type	Basic Step Angle	Frame Size			
		28 mm (1.10 in.)	42 mm (1.65 in.)	60 mm (2.36 in.)	85 mm (3.35 in.)
Standard Type	0.72°				The 85 mm (3.35 in.) frame size is available in the <b>RKII</b> series. → Page A-84
High-Resolution Type	0.36°	—			

## System Configuration

These accessories allow the 0.72°/0.36° **PKP** Series products to be used for various operations.

\*Not supplied



● The system configuration shown above is an example. Other combinations are also available.

Overview, Product Series

AC Input Motor & Driver

0.36°/Geared **Q<sub>STEP</sub> AR**

0.36°/Geared **Q<sub>STEP</sub> Absolute AZ**

0.72°/Geared **RKII**

DC Input Motor & Driver

0.36°/Geared **Q<sub>STEP</sub> AR**

0.36°/Geared **Q<sub>STEP</sub> Absolute AZ**

0.72°/0.36°/Geared **CRK**

1.8°/Geared **RBK**

1.8°/0.9°/Geared **CMK**

0.72° All-in-One **PKA**

Motor Only

1.8°/0.9° **PKP/PK**

Geared **PKP**

0.72°/0.36° **PKP**

Accessories

## Product Number

# PKP 5 6 6 F N 24 A W

① ② ③ ④ ⑤ ⑦ ⑧ ⑨ ⑩

# PKP 5 4 4 M N 18 A - L

① ② ③ ④ ⑥ ⑦ ⑧ ⑨ ⑪

①	Series Name	<b>PKP: PKP Series</b>
②	5-Phase	
③	Motor Frame Size	<b>2:</b> 28 mm (1.10 in.) <b>4:</b> 42 mm (1.65 in.) <b>6:</b> 60 mm (2.36 in.)
④	Motor Case Length	
⑤	Motor Classification	<b>F:</b> Motor Frame Size of 60 mm (2.36 in.)
⑥	Motor Type	Blank: Standard Type <b>M:</b> High-resolution Type
⑦	Number of Lead Wires	<b>N:</b> 5 Leads
⑧	Motor Winding Specifications	
⑨	Configuration	<b>A:</b> Single Shaft <b>B:</b> Double Shaft
⑩	Cable Identification	Blank: Connector Connection Formula <b>W:</b> Lead Wire Type
⑪	Connection Cable	<b>L:</b> Included Connection Cable

## Product Line

### Standard Type (0.72°)

Product Name (Single Shaft)	List Price	Product Name (Double Shaft)	List Price
<b>PKP523N12A-L</b>	\$64.00	<b>PKP523N12B-L</b>	\$66.00
<b>PKP525N12A-L</b>	\$74.00	<b>PKP525N12B-L</b>	\$76.00
<b>PKP544N18A-L</b>	\$54.00	<b>PKP544N18B-L</b>	\$56.00
<b>PKP546N18A-L</b>	\$62.00	<b>PKP546N18B-L</b>	\$64.00
<b>PKP564FN24AW</b>	\$61.00	<b>PKP564FN24BW</b>	\$63.00
<b>PKP566FN24AW</b>	\$67.00	<b>PKP566FN24BW</b>	\$69.00
<b>PKP569FN24AW</b>	\$90.00	<b>PKP569FN24BW</b>	\$93.00

### High-Resolution Type (0.36°)

Product Name (Single Shaft)	List Price	Product Name (Double Shaft)	List Price
<b>PKP544MN18A-L</b>	\$54.00	<b>PKP544MN18B-L</b>	\$56.00
<b>PKP546MN18A-L</b>	\$62.00	<b>PKP546MN18B-L</b>	\$64.00
<b>PKP564FMN24A-L</b>	\$61.00	<b>PKP564FMN24B-L</b>	\$63.00
<b>PKP566FMN24A-L</b>	\$67.00	<b>PKP566FMN24B-L</b>	\$69.00
<b>PKP569FMN24A-L</b>	\$90.00	<b>PKP569FMN24B-L</b>	\$93.00

The following items are included with each product.

Motor, Connection Cable\*, Operating Manual  
\*Only for connector-coupled motor.



For details (specifications, characteristics, dimensions and others) on these products please refer to either to our website, contact technical support or your nearest Oriental Motor sales office.

[www.orientalmotor.com/catalog](http://www.orientalmotor.com/catalog)