

Controller

Network-Compatible Products Overview

Modbus (RTU)

EtherCAT

Network Converters

Controller Overview

Controller Overview

SCX11

SCX11

	Page
Overview of Controllers	G-12
SCX11	G-14

Overview of Controllers

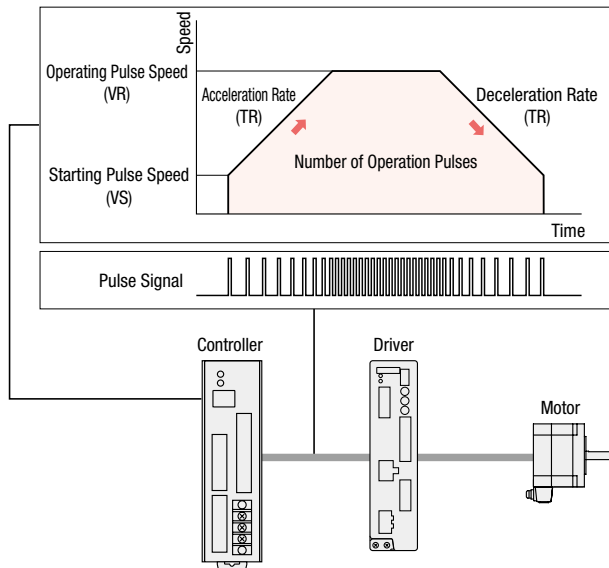
At Oriental Motor, a device that outputs the pulse signals required to operate a stepper motor or an AC servo motor is called a "controller". These products can perform various settings to control the motor and also permit connection with a programmable controller and sensors. Select a controller that best suits the system.

Features

Possible to Set Positioning Operation Parameters

The desired positioning operation parameters (number of operating pulses, starting pulse speed, operating pulse speed, acceleration/ deceleration rate, etc.) can be set.

Data Setting



Starting Pulse Speed (VS) [Hz]

This is the frequency at which output of pulse signals is started. The controller starts outputting pulse signals at the frequency specified by the starting pulse speed, and increases the frequency along the slope specified by the acceleration/deceleration rate.

Operating Pulse Speed (VR) [Hz]

This is the target pulse signal frequency. This frequency dictates the operating speed of the motor.

Acceleration/Deceleration Rate (TR) [ms/kHz]

This is the slope along which the pulse signal frequency is increased (acceleration) or decreased (deceleration).

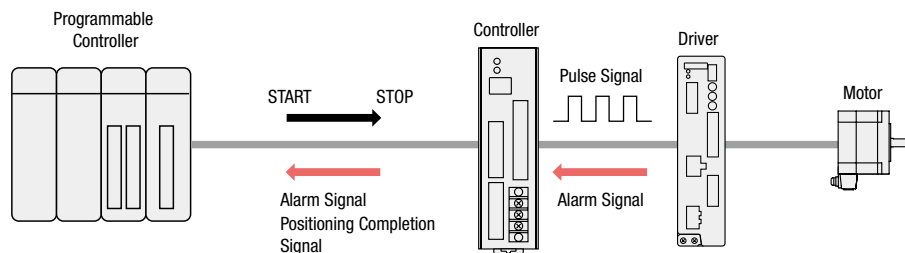
At Oriental Motor, the time needed to increase (or decrease) the frequency by 1 kHz is expressed in units of ms/kHz.

The specific method of data setting varies from one product to another depending on, for example, whether a dedicated control module is used or a computer is used. For details, refer to the page explaining each product.

Operation System

A system configuration for controlling a positioning motor is shown below.

The controller receives signals from the programmable controller and outputs pulse signals to the driver.



The specifics vary depending on the product. For details, refer to the page explaining each product.

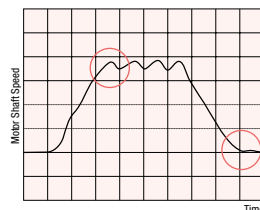
Jerk Limiting Control Function for Suppressing Vibration of the Motor

The "jerk limiting control function" allows for the suppression of the vibration that occurs when the motor is being driven or stopped. For example, it is effective in situations such as suppressing vibration from belt pulley driving.

Measurement Condition

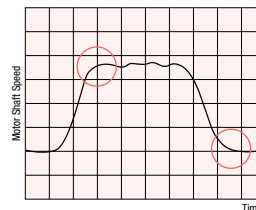
Application: Belt drive
Operating Mode: Positioning operation
Load: 10 kg (22 lb.)

Vibration that occurs when the operation mode is switched from acceleration and deceleration to constant speed manifests as vibration of the mechanism.



Linear Controlled Acceleration/Deceleration Pattern

By suppressing vibration that otherwise occurs when the operation mode is switched from acceleration and deceleration to constant speed, vibration of the mechanism is suppressed.



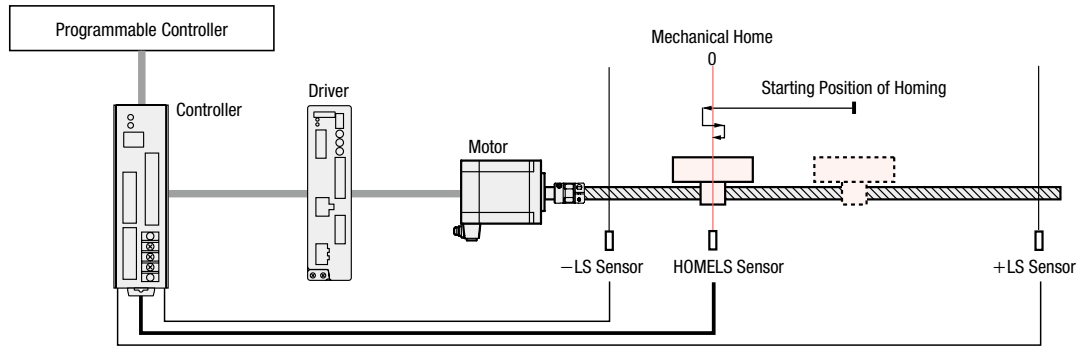
Jerk Controlled Acceleration/Deceleration Pattern

These graphs are provided only as a reference. The actual effect of this function will vary depending on the mechanism of the equipment.

● **Offering Functions to Facilitate Motor Control**

◇ **Return-to-Mechanical Home Operation Function**

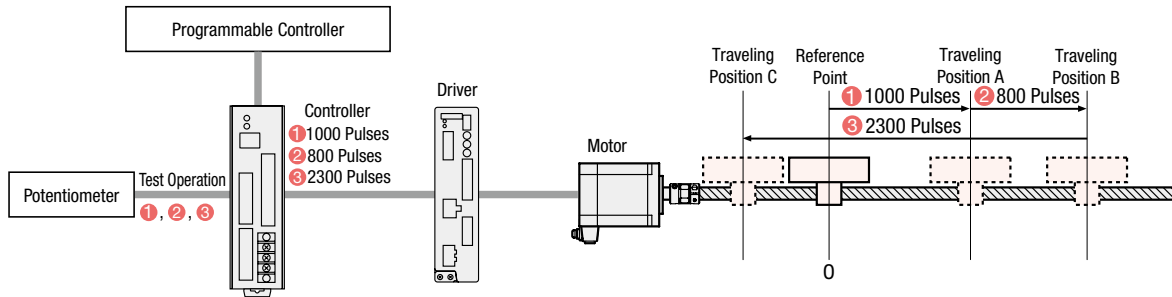
To perform accurate positioning operation, the mechanical home that defines the reference point must be determined accurately. Oriental Motor's controllers are equipped with the "automatic return-to-home operation function." All that is needed is to wire a home sensor, and the home detection function can be used right away.



◇ **Test Mode Function**

When building equipment, sometimes it is necessary to perform operation verification for just the driving part before the sequence program is completed.

Oriental Motor's controllers are equipped with a "test mode", which can be used to verify operation based on data set in the controller.



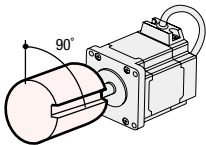
◇ **I/O Check Function**

The connection (I/Os) with the programmable controller can be checked.

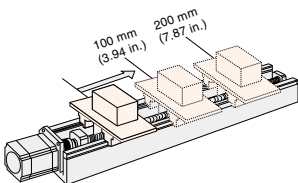
◇ **Traveling Amount Setting in Multiple Units such as mm**

The traveling amounts can be set by angle (degrees) or mm in addition to pulses.

- Setting in degrees



- Setting in mm



● The specifics vary depending on the product. For details, refer to the page explaining each product.

Network-Compatible Products Overview

Modbus (RTU)

EtherCAT

Network Converters

Controller Overview

SCX11

Stored-Program Type Controller

SCX11 Universal Controller

For detailed information about regulations and standards, please see the Oriental Motor website.



The **SCX11** universal controller is a highly functional and sophisticated controller, equipped with program editing and execution functions. The **SCX11** is also able to control the motor via various serial ports such as USB, RS-232C and **CANopen**.



See Full Product Details Online
www.orientalmotor.com

● Manual

● Specifications

● Dimensions

● CAD

● Characteristics

● Connection and Operation

Features

● 100 Sequence Programs can be Stored

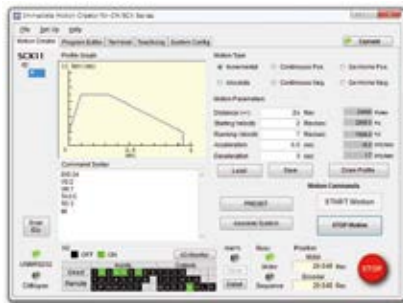
The **SCX11** can store up to 100 programs and execute various operations, from simple movements like "repeated positioning operation" to complicated controls like "operation by calculating the value based on external inputs".

● Easy Operation

The convenient and easy-to-use PC software, "Immediate Motion Creator for **SCX Series**", is provided with the **SCX11**. Easily start an operation with the click of a button or start key by setting the travel amount and speed. The GUI allows for easy program creation by selecting commands from the command list. Other functions available include, real time monitor for the teaching position, current position and I/O status, system parameter setting and I/O assignment.



PC software
"Immediate Motion Creator for
CM/SCX Series" (Included)



● USB Port as Standard Equipment

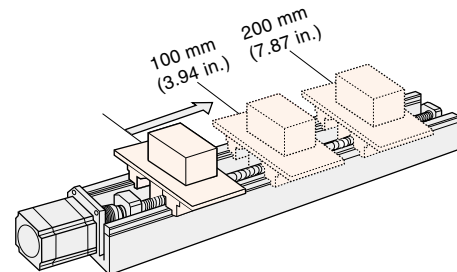
The **SCX11** has a mini USB port on the front panel which can directly connect to a PC through a commercially available mini USB cable. No special cable or converter is required.

● Changeover from **SCX10** is Possible

Functions like serial communication, I/O signals, commands etc. are the same as the **SCX10**, so changeover is easy.

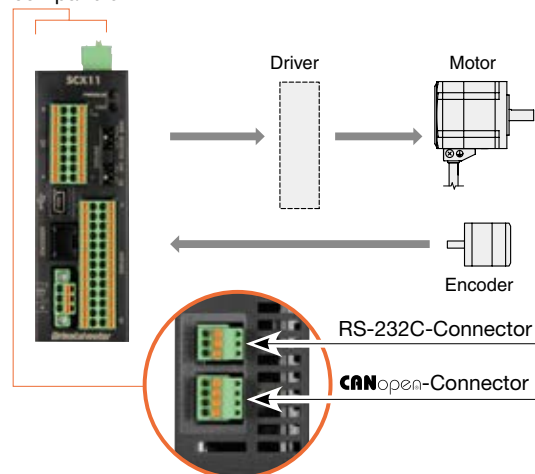
● Intelligent Setting

Program data for speed and travel amounts by setting the "User Unit" parameter. Data can be programmed in units such as "mm", "inch" and "revolution".

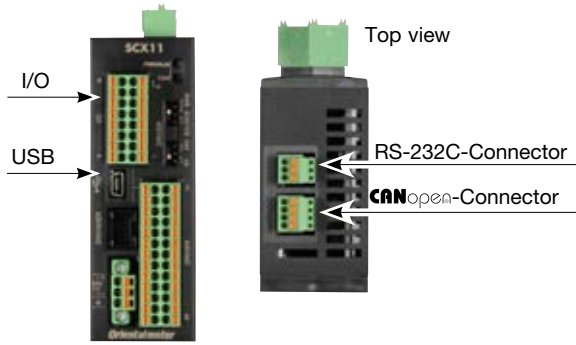


● External Encoder Input

The **SCX11** has a function for external encoder inputs which enables continuous monitoring of the feedback position and position error. Line driver, open collector and TTL inputs are compatible.

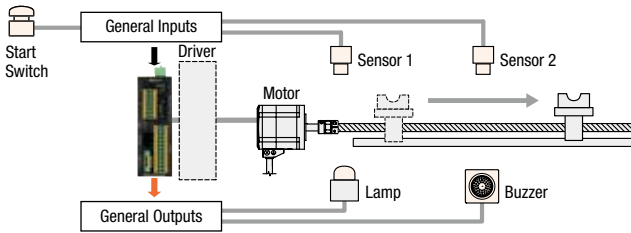


● Various Interfaces for Operation



◇ Stand-Alone Operation Using Sensors and Switches

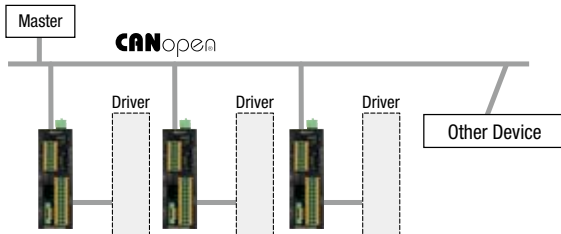
The **SCX11** can operate as a stand-alone controller, without a PC or programmable controller by utilizing 9 general inputs and 4 general outputs to select the desired sequences.



◇ Direct Command Operation via CANopen

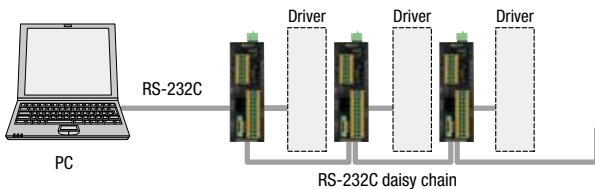
The **SCX11** has a standard built-in interface for CANopen.

*CANopen for the **SCX11** is certified by CIA (CAN in Automation).



◇ Operation Using a PC

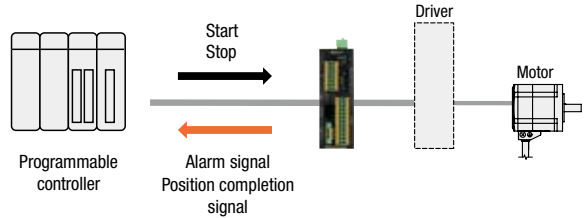
The **SCX11** can connect to a PC via RS-232C or USB*. The **SCX11** can also be connected via an RS-232C daisy chain connection for multi-axis control with another **SCX11** or **SCX10** controller.



*Multi-axis control via USB is configured with multiple USB ports.

◇ Operation Using a Programmable Controller

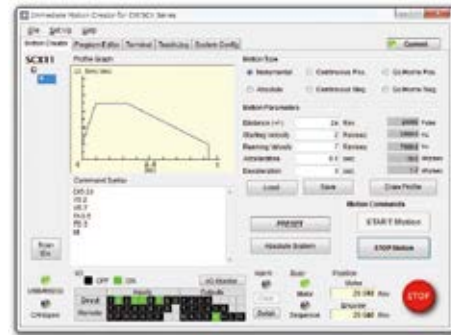
The **SCX11** can communicate a wide variety of signals via I/O to a programmable controller. Serial communications is also available, if the programmable controller has a USB or RS-232C interface built-in.



● Two Types of Operations

◇ Executing Sequence Operation [Stored Program Function]

This function is available for conditional branching using general-purpose I/O, wait processes using internal timers and other operations based on sequence control including setting the positioning and speed data. The **SCX11** can store up to 100 different programs that can be selected and executed via USB, RS-232C, CANopen and I/O port.



[Example program]

```
Seq 1
[1] VS 1 : Starting Velocity*
[2] VR 9 : Running Velocity*
[3] TA 1 : Acceleration Time
[4] TD 2 : Deceleration Time
[5] DIS 2 : Incremental Motion Distance*
[6] LOOP 3 : Begin Counted LOOP Block
[7] MI : Move Incremental Distance
[8] MEND : Wait for Motion End
[9] WAIT 1 : Wait for Specified Time
[10] ENDL : End of LOOP Block
[11] MAO : Move to Absolute Position
[12] MEND : Wait for Motion End
[13] END : End Sequence
```

*Set the speed and travel amount as the unit of the actual motion such as "mm", "inch" and "revolution".

Network-Compatible Products Overview

Modbus (RTU)

EtherCAT

Network Converters

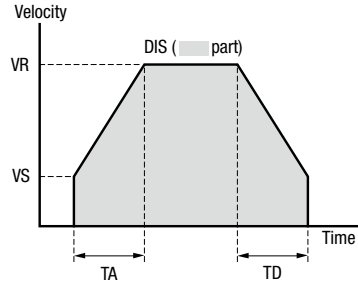
Controller Overview

SCX11

◇ Direct Command Operation

Operate a motor directly by sending commands via the serial port (USB, RS-232C, CANopen) from a PC or programmable controller. This function is suitable for applications where positioning data is updated frequently or managed all at once by the PC or programmable controller.

```
>DIS=60
DIS=60 mm
>VR=5
VR=5 mm/sec.
>VS=1
VS=1 mm/sec.
>TA=0.5
TA=0.5
>TD=0.5
TD=0.5
>MI
>
```



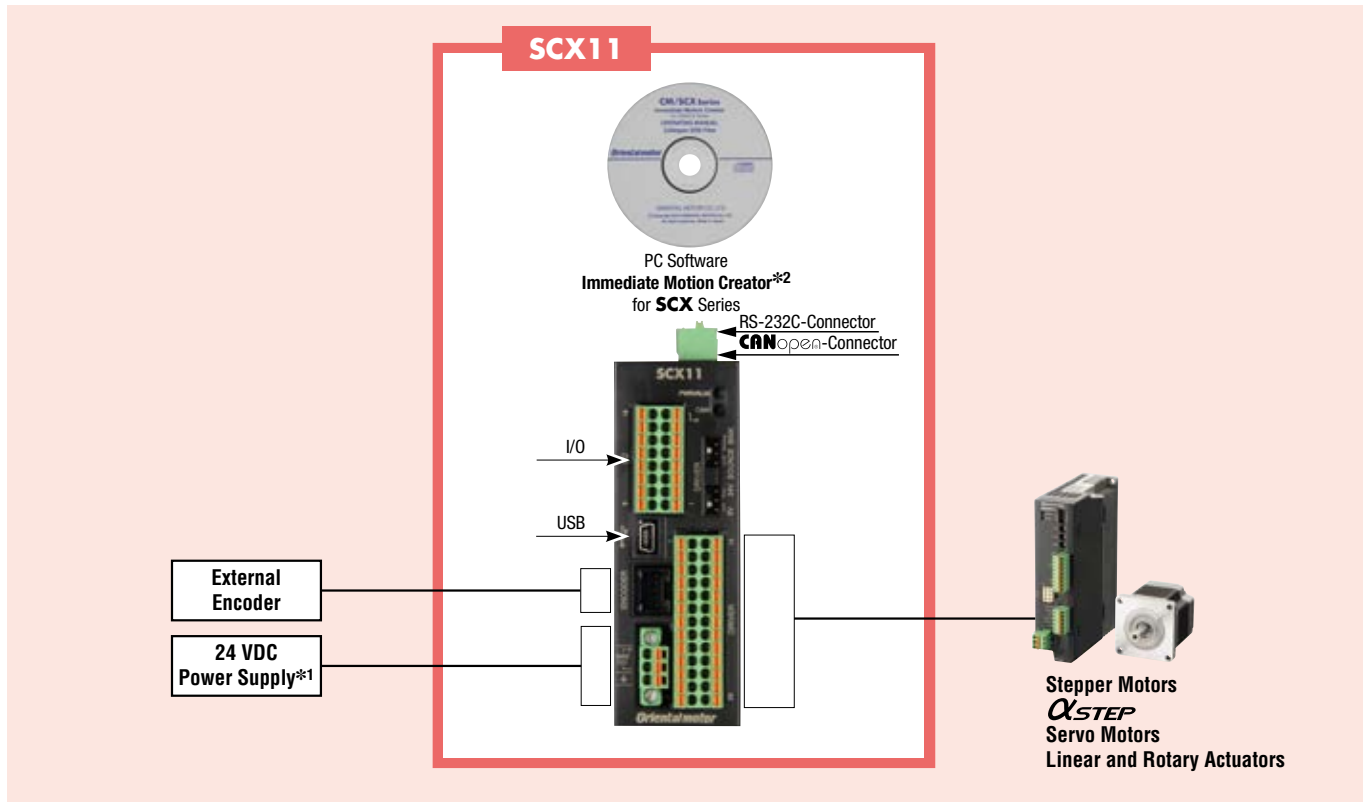
[Example Commands]

- DIS : Incremental Motion Distance
- VR : Running Velocity
- VS : Starting Velocity
- TA : Acceleration Time
- TD : Deceleration Time
- MI : Move Incremental Distance
- MA : Move to Absolute Position
- MCP : Move Continuously, Positive
- M CN : Move Continuously, Negative
- M G H P : Seek Mechanical Home Position
- ALM CLR : Clear Alarm Condition

■ System Configuration

An example of a system configuration with the **SCX11** controller.

*1 Not supplied
*2 Available for download. See website for details.



● The system configuration shown above is an example. Other combinations are available.

■ Product Line

Product Name	List Price
SCX11	\$349.00

For details (specifications, characteristics, dimensions and more) on these products, please either refer to our website or contact technical support or your nearest Oriental Motor sales office.
www.orientalmotor.com

Network-
Compatible
Products
Overview

Modbus
(RTU)

EtherCAT

Network
Converters

Controller
Overview

SCX11